

Airwell AQL 25 CO B Coil STD pump

Specifications

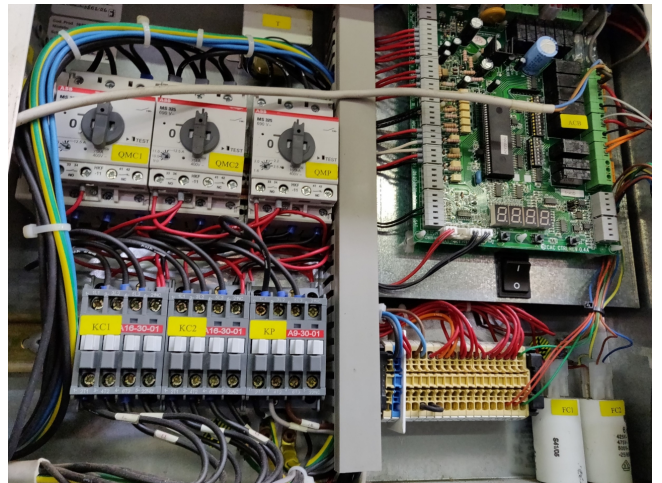
Brand	Airwell
Tipo	AQL 25 CO B Coil STD pump
Product type	Air Cooled Chiller
Capacidad kW	26
Capacity Tons	7,39
Refrigerante	Freon
Tipo de Refrigerante	R407C
Pump	✓
Módulo hidráulico	✓
Peso kg.	265
Sizes	1477x516x1607 mm (LxWxH)
Remarks	YOB 2006
Stock	1



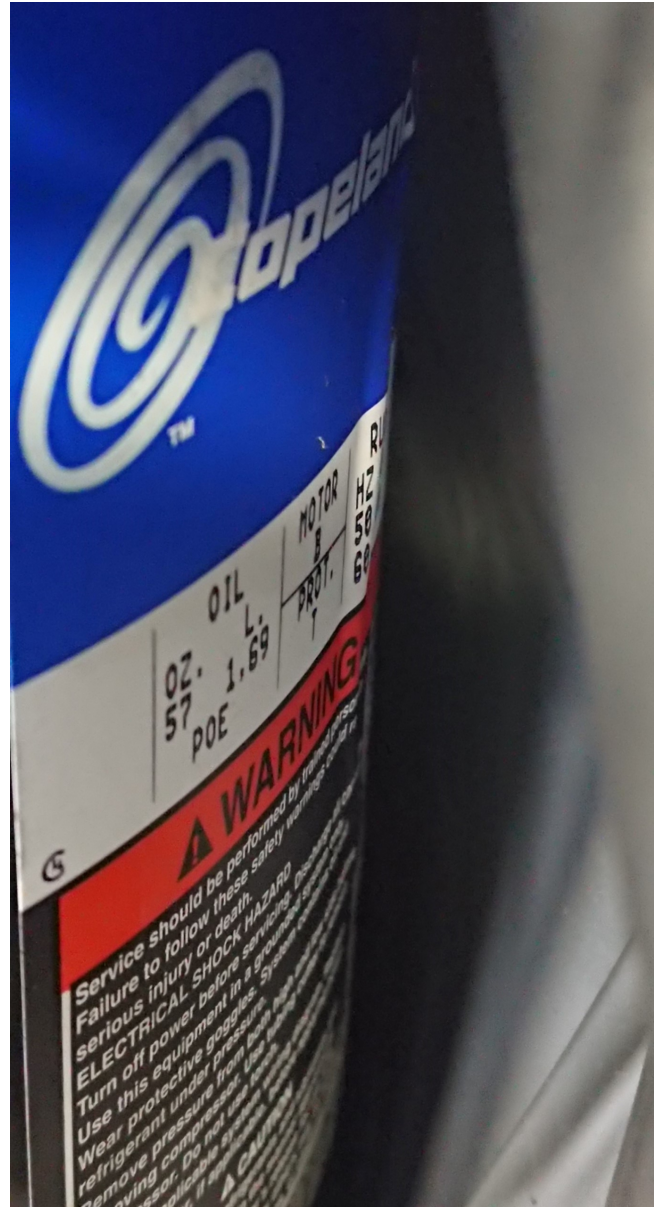
Description

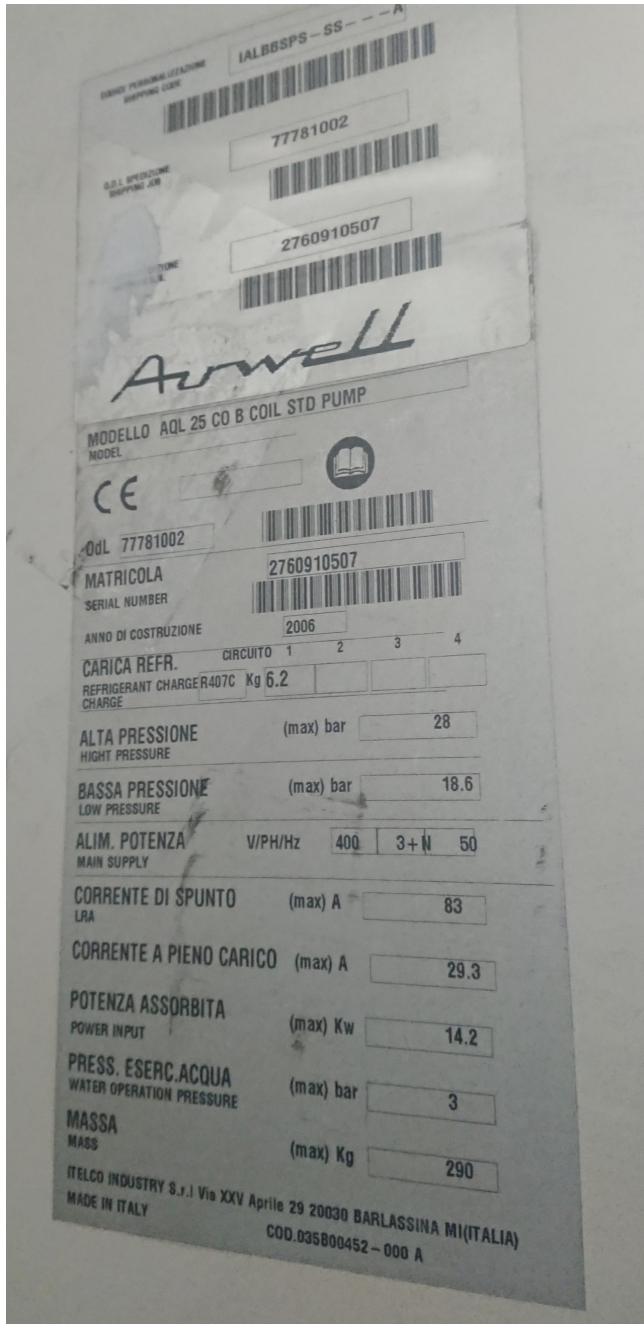
Used Airwell AQL 25 CO B Coil STD pump

Used but in very good condition Airwell AQL 25 CO B Coil STD pump with 2 scroll compressors and 2 fans, manufacturing year 2006. *All components of this used chiller will be tested on good working, leak free condition (electro engines), coils, bearings, fans) Choosing HOSBV means buying with warranty. We perform an industrial cleaning and rust spots will be covered. Also, we can arrange your shipment.









Technical characteristics - HFC 407C

AQL sizes	20	25	30	35	40	50	60	70	80	
Power supply (V / Ph / Hz)	400/3/N/50									
Cooling capacity *	kW	21.5	26.0	29.9	34.2	42.0	46.5	56.9	67.3	75.4
Total power consumption with pump	kW	8.4	10.0	11.4	12.2	16.1	19.4	23.9	28.1	30.7
Total power consumption	kW	7.6	9.2	10.6	11.4	15.4	18.7	22.8	27.0	29.6
COP		3.0	3.0	3.0	2.9	2.9	2.6	2.7	2.7	2.7
Refrigerant charge	kg	6.2	6.2	6.2	7.6	9	9	10	11	16
Lw sound power levels	dB(A)	75	76	76	77	82	82	84	87	87
Compressors										
Type	Scroll - Hermetically sealed									
Quantity	2	2	2	2	2	2	2	2	2	2
Capacity reduction stages	2	2	2	2	2	2	2	2	2	2
Minimum capacity	%	50	50	50	50	45	36	36	45	50
Safety presostat	HP (fixed set point) LP transducer HP transducer									
Evaporator										
Type	Brazed stainless steel plates									
Maximum pressure refrigerant side	bar	30								
Maximum pressure water side	bar	10								
Safety	Differential presostat					Water flow switch				
Anti-freaza protection heating resistance		1	1	1	1	1	1	1	1	1
Water volume	litres	1.67	2.2	2.44	2.44	3.44	4.33	5.33	6.33	7.10
Condenser										
Type	3/8" copper tube - Louvred aluminum fins									
Fans										
Quantity	2	2	2	2	1	1	1	1	1	1
Fan diameter	mm	610	610	610	610	800	800	800	800	800
Speed (High/Low)	rpm	640/500	640/500	640/500	640/500	700/500	700/500	700/500	900/520	900/520
Max air flow (HS)	m ³ /h	11200	11200	11200	11200	15500	15500	15500	21000	21000